

小包裝抗體組合包

針對各種熱門研究主題收錄最核心重要的研究標的抗體，便利科研人員能夠以高效經濟的方式分析多種研究標的、或測試多種不同克隆單株抗體！每株抗體也有不限於各組合包目標實驗的應用 (Ex: Flow, ICC...)。完整產品資訊請洽 Abcam 台灣代理 — 伯森生技。



Abcam Antibody Panels Product Catalog Contents

Apoptosis	1	Epigenetics	7	Tags & Cell Markers	16
Cancer.....	3	Immunology	9	WB Loading Control	16
Cardiovascular	3	Neuroscience	11		
Cell Cycle & Signaling	5	Stem Cells	15		

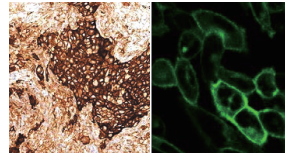
Apoptosis

Featured Panel

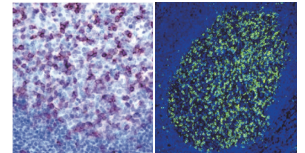


Immune Checkpoint Inhibitors Panel - Human IHC [\(ab278174\)](#)

- Rabbit monoclonal [73-10] to PD-L1 (**ab228415**)
- Rabbit monoclonal [EPR4877(2)] to PD-L1 (**ab137132**)
- Rabbit monoclonal [EPR20261] to LAG-3 (**ab209236**)
- Rabbit monoclonal [EPR22241] to TIM 3 (**ab241332**)
- Rabbit monoclonal [EPR21050] to VISTA (**ab230950**)
- Rabbit monoclonal [CAL49] to CTLA4 (**ab237712**)
- Rabbit monoclonal [BLR047F] to TIGIT - BSA free (**ab243903**)



ab228415
Cited in over 25 publications



ab137132
Cited in over 100 publications

Antibody Panel and Panel Contents

Size Cat. No.

Granzyme B Antibody Panel (EPR8260, EPR20129-217, BLR022E) [\(ab252202\)](#)

Antibody	Panel target species:	Size	Cat. No.
Anti-Granzyme B antibody [BLR022E]	Human	20 µl	ab243879
Anti-Granzyme B antibody [EPR20129-217]	Human	20 µl	ab208586
Anti-Granzyme B antibody [EPR8260]	Human	20 µl	ab134933

Immune Checkpoint Inhibitors Panel - Human IHC [\(ab278174\)](#)

Antibody	Panel target species:	Size	Cat. No.
Anti-PD-L1 antibody [73-10]	Human	20 µl	ab228415
Anti-PD1 antibody [EPR4877(2)]	Human	20 µl	ab137132
Anti-LAG-3 antibody [EPR20261]	Human	20 µl	ab209236
Anti-TIM 3 antibody [EPR22241]	Human	20 µl	ab241332
Anti-VISTA antibody [EPR21050]	Human	20 µl	ab230950
Anti-CTLA4 antibody [CAL49]	Human	20 µl	ab237712
Anti-TIGIT antibody [BLR047F] - BSA free	Human	20 µl	ab243903



Apoptosis (continued)

Antibody Panel and Panel Contents

Size Cat. No.

Inhibitory Immune Checkpoint panel 2 - Human IHC [\(ab278175\)](#)

Anti-CD47 antibody [EPR21794]		20 µl	ab218810
Anti-SIRP alpha antibody [EPR22930-163]		20 µl	ab260039
Anti-CD272/BTLA antibody [EPR22224-271]	WB invalid	20 µl	ab230976
Anti-galectin 9/Gal-9 antibody [EPR22214]		20 µl	ab227046
Anti-Indoleamine 2, 3-dioxygenase antibody [EPR20374]		20 µl	ab211017
Anti-2B4 antibody [EPR23692-33]		20 µl	ab256370
Anti-CD276 antibody [SP206]		20 µl	ab227670

Panel target species:
Human

Panel target application:
WB IHC-P

Immune Checkpoint Inhibitors Panel - Human WB [\(ab278172\)](#)

Anti-PD-L1 antibody [73-10]		20 µl	ab228415
Anti-PD-L2 antibody [CAL28]	IHC-P invalid	20 µl	ab256386
Anti-PD1 antibody [EPR23119-111]		20 µl	ab243644
Anti-LAG-3 antibody [EPR20261]		20 µl	ab209236
Anti-TIM 3 antibody [EPR22241]		20 µl	ab241332
Anti-VISTA antibody [EPR21050]		20 µl	ab230950
Anti-CTLA4 antibody [CAL49]		20 µl	ab237712
Anti-TIGIT antibody [BLR047F] - BSA free		20 µl	ab243903

Panel target species:
Human

Panel target application:
WB IHC-P

Inhibitory Immune Checkpoint panel 2 - Human WB [\(ab278173\)](#)

Anti-CD47 antibody [EPR21794]		20 µl	ab218810
Anti-SIRP alpha antibody [EPR16264]		20 µl	ab191419
Anti-NKG2A antibody [EPR23620-39]		20 µl	ab252437
Anti-galectin 9/Gal-9 antibody [EPR22214]		20 µl	ab227046
Anti-Indoleamine 2, 3-dioxygenase antibody [EPR20374]		20 µl	ab211017
Anti-2B4 antibody [EPR23692-33]		20 µl	ab256370
Anti-CD276 antibody [SP206]		20 µl	ab227670

Panel target species:
Human

Panel target application:
WB

PD1 Antibody Panel (EPR4877(2), SP269, CAL20, NAT105, NAT105-EPR21106) [\(ab252192\)](#)

Anti-PD1 antibody [CAL20]		20 µl	ab237728
Anti-PD1 antibody [EPR4877(2)]		20 µl	ab137132
Anti-PD1 antibody [NAT105]		20 µg	ab52587
Anti-PD1 antibody [NAT105] - Chimeric		20 µl	ab216352
Anti-PD1 antibody [SP269]		20 µl	ab227681

Panel target species:
Human

Panel target application:
IHC-P

Pro-Apoptosis Bcl Family Antibody Sampler Panel [\(ab228527\)](#)

Anti-Bad antibody [Y208]		10 µl	ab32445
Anti-Bax antibody [E63]		10 µl	ab32503
Anti-Bcl-2 antibody [EPR17509]		10 µl	ab182858
Anti-Bcl-XL antibody [E18]		10 µl	ab32370
Anti-MCL1 antibody [Y37]	Mouse invalid	10 µl	ab32087
Anti-Rabbit IgG H&L (HRP)		100 µg	ab205718

Panel target species:
Human, Mouse

Panel target application:
WB IHC-P

T cell Exhaustion Marker (PD1, CTLA4, TIM3, LAG3, TIGIT) Antibody Panel - Human, IHC [\(ab254018\)](#)

Anti-PD1 antibody [NAT105]		20 µg	ab52587
Anti-CTLA4 antibody [CAL49]		20 µl	ab237712
Anti-TIM 3 antibody [EPR22241]		20 µl	ab241332
Anti-LAG-3 antibody [EPR20261]		20 µl	ab209236
Anti-TIGIT antibody [BLR047F] - BSA free		20 µl	ab243903

Panel target species:
Human

Panel target application:
WB IHC-P

Apoptosis (continued)

Antibody Panel and Panel Contents

Size Cat. No.

Stimulatory Immune Checkpoint panel 1 - Human WB (ab278176)

Antibody	Panel target species:	Size	Cat. No.	
Anti-OX40L/TNFSF4 antibody [EP1168Y]	Human	20 μ l	ab76130	
Anti-CD134 / OX40L receptor antibody [EPR23000-42]		20 μ l	ab264466	
Anti-ICOS antibody [EPR20560]		20 μ l	ab224644	
Anti-ICOS Ligand/ICOSL antibody [EPR20240]		20 μ l	ab209262	
Anti-CD137 antibody [EPR20238]		Panel target application:	20 μ l	ab209256
Anti-4-1BBL antibody [EPR21995-147]		WB	20 μ l	ab254385
Anti-CD40 antibody [EPR20735]			20 μ l	ab224639
Anti-TRAP/CD40L antibody [EP462E]			20 μ l	ab52750

Cancer

Antibody Panel and Panel Contents

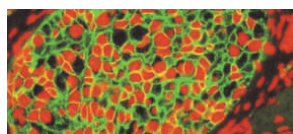
Size Cat. No.

EMT Marker / Epithelial to Mesenchymal Transition Marker Panel (ab216833)

Antibody	Panel target species:	Panel target application:	Size	Cat. No.
Anti-E Cadherin antibody [EP700Y]	Human	WB IHC-P	10 μ l	ab40772
Anti-N Cadherin antibody [EPR1791-4]			10 μ l	ab76011
Anti-SNAIL + SLUG antibody			10 μ g	ab85936
Anti-Vimentin antibody [EPR3776]			10 μ l	ab92547
Anti-Rabbit IgG H&L (HRP)			100 μ g	ab205718

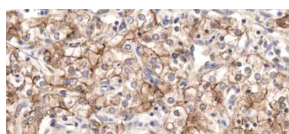


ab21833



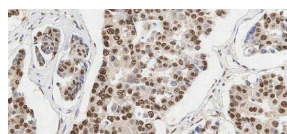
ab40772

Cited in over 750 publications



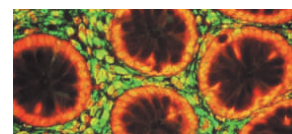
ab76011

Cited in over 375 publications



ab85936

Cited in over 35 publications



ab92547

Cited in over 1730 publications

Cardiovascular

Antibody Panel and Panel Contents

Size Cat. No.

HIF-1 alpha (H1alpha67, EP1215Y, ESEE122, EPR16897) Antibody Panel (ab263460)

Antibody	Panel target species:	Panel target application:	Size	Cat. No.	
Anti-HIF-1 alpha antibody [H1alpha67]	Human	WB IHC-P	20 μ g	ab1	
Anti-HIF-1 alpha antibody [EP1215Y]			IHC-P invalid	20 μ l	ab51608
Anti-HIF-1 alpha antibody [ESEE122]			WB invalid	20 μ g	ab8366
Anti-HIF-1 alpha antibody [EPR16897]				20 μ l	ab179483



ab263460



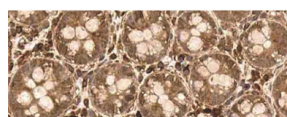
ab1

Cited in over 340 publications



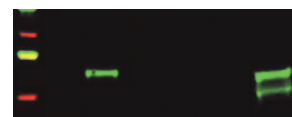
ab51608

Cited in over 330 publications



ab8366

Cited in over 50 publications



ab179483

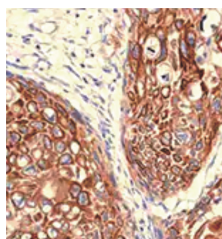
Cited in over 195 publications

Featured Panel

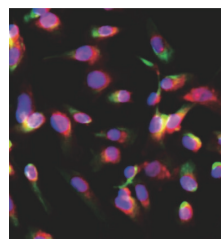


Neural Progenitor Cell Marker (CXCR4, Nestin, PDGFR, SOX2, Vimentin, Doublecortin) Antibody Panel [\(ab263461\)](#)

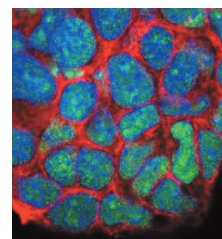
- Rabbit monoclonal [UMB2] to CXCR4 (**ab124824**)
- Rabbit monoclonal [SP103] to Nestin (**ab105389**)
- Rabbit monoclonal [EPR22059-270] to PDGFR alpha (**ab203491**)
- Rabbit monoclonal [EPR3131] to SOX2 (**ab92494**)
- Rabbit monoclonal [EPR3776] to Vimentin - Cytoskeleton Marker (**ab92547**)
- Rabbit monoclonal [EPR19997] to Doublecortin (**ab207175**)



ab124824
Cited in over 235 publications



ab105389
Cited in over 70 publications



ab92494
Cited in over 235 publications

Antibody Panel and Panel Contents

Size Cat. No.

Macrophage Polarization Panel - Human IHC [\(ab278180\)](#)

Antibody	Application	Panel target species:	Panel target application:	Size	Cat. No.
Anti-iNOS antibody [SP126]	WB invalid	Human	IHC-P	20 µl	ab115819
Anti-CD11b antibody [EPR1344]				20 µl	ab133357
Anti-Liver Arginase antibody [EPR6672(B)]				20 µl	ab133543
Anti-CD163 antibody [EPR19518]				20 µl	ab182422
Anti-CD68 antibody [EPR20545]				20 µl	ab213363
Anti-CSF-1-R antibody [EPR20754]				20 µl	ab229188
Anti-TIM 3 antibody [EPR22241]				20 µl	ab241332
Anti-Mannose Receptor antibody [EPR22489-7]				20 µl	ab252921

Macrophage Polarization Panel - Human WB [\(ab278181\)](#)

Antibody	Application	Panel target species:	Panel target application:	Size	Cat. No.
Anti-iNOS antibody [EPR16635]	IHC-P invalid	Human	WB, IHC-P	20 µl	ab178945
Anti-CD11b antibody [EPR1344]				20 µl	ab133357
Anti-Liver Arginase antibody [EPR6672(B)]				20 µl	ab133543
Anti-CD163 antibody [EPR19518]				20 µl	ab182422
Anti-CD68 antibody [EPR20545]				20 µl	ab213363
Anti-CSF-1-R antibody [EPR20754]				20 µl	ab229188
Anti-TIM 3 antibody [EPR22241]				20 µl	ab241332
Anti-Mannose Receptor antibody [EPR22489-7]				20 µl	ab252921

Neural Progenitor Cell Marker (CXCR4, Nestin, PDGFR, SOX2, Vimentin, Doublecortin) Antibody Panel [\(ab263461\)](#)

Antibody	Application	Panel target species:	Panel target application:	Size	Cat. No.
Anti-CXCR4 antibody [UMB2]		Human	WB, IHC-P, ICC	20 µl	ab124824
Anti-Nestin antibody [SP103]				20 µl	ab105389
Anti-PDGFR alpha antibody [EPR22059-270]				20 µl	ab203491
Anti-SOX2 antibody [EPR3131]				20 µl	ab92494
Anti-Vimentin antibody [EPR3776] - Cytoskeleton Marker				20 µl	ab92547
Anti-Doublecortin antibody [EPR19997]				20 µl	ab207175

Pericyte Marker (CD31, NG2, PDGFR beta, CD146, Nestin) Antibody Panel - Human [\(ab254020\)](#)

Antibody	Application	Panel target species:	Panel target application:	Size	Cat. No.
Anti-CD31 antibody [EP3095]		Human	WB, IHC-P	20 µl	ab134168
Anti-NG2 antibody [EPR20244]				20 µl	ab183929
Anti-PDGFR beta antibody [Y92] - C-terminal				20 µl	ab32570
Anti-CD146 antibody [P1H12]				20 µl	ab24577
Anti-Nestin antibody [SP103]				20 µl	ab105389

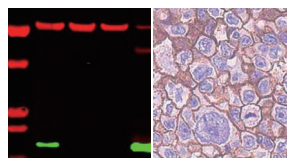
Cell Cycle & Signaling

Featured Panel

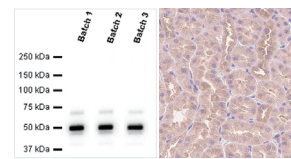


Exosome Panel (Calnexin, CD9, CD63, CD81, Hsp70, TSG101) [\(ab275018\)](#)

- Rabbit monoclonal [EPR3633(2)] to Calnexin (**ab133615**)
- Rabbit monoclonal [EPR23105-125] to CD9 (**ab263019**)
- Rabbit monoclonal [EPR5702] to CD63 (**ab134045**)
- Rabbit monoclonal [EPR4244] to CD81 (**ab109201**)
- Rabbit monoclonal [EPR16892] to Hsp70 (**ab181606**)
- Rabbit monoclonal [EPR7130(B)] to TSG101 (**ab125011**)



ab263019
Cited in over 20 publications



ab125011
Cited in over 600 publications

Antibody Panel and Panel Contents

Size Cat. No.

Cell Cycle (Cdk2, Cdk6, Cyclin B1, Cyclin D1, p21, p27 KIP 1) Antibody Sampler Panel [\(ab228528\)](#)

Anti-Cdk2 antibody [E304]		10 μ l	ab32147
Anti-Cdk6 antibody [EPR4515]	Mouse invalid	10 μ l	ab124821
Anti-Cyclin B1 antibody [EPR17060]		10 μ l	ab181593
Anti-Cyclin D1 antibody [EPR2241]		10 μ l	ab134175
Anti-p21 antibody [EPR3993]	IHC-P invalid	10 μ l	ab109199
Anti-p27 KIP 1 antibody [Y236]		10 μ l	ab32034
Anti-Rabbit IgG H&L (HRP)		10 μ l	ab205718

Panel target species:
Human, Mouse

Panel target application:
WB IHC-P

c-Met Antibody Panel (EP1454Y, EPR19067, SP44, CAL12) [\(ab252205\)](#)

Anti-Met (c-Met) antibody [CAL12]		20 μ l	ab237711
Anti-Met (c-Met) antibody [EP1454Y] - N-terminal		20 μ l	ab51067
Anti-Met (c-Met) antibody [EPR19067]		20 μ l	ab216574
Anti-Met (c-Met) antibody [SP44] - C-terminal		20 μ l	ab227637

Panel target species:
Human

Panel target application:
IHC-P

Exosome Panel (Calnexin, CD9, CD63, CD81, Hsp70, TSG101) [\(ab275018\)](#)

Anti-Calnexin antibody [EPR3633(2)] - ER Membrane Marker		20 μ l	ab133615
Anti-CD9 antibody [EPR23105-125]		20 μ l	ab263019
Anti-CD63 antibody [EPR5702]		20 μ l	ab134045
Anti-CD81 antibody [EPR4244]	IHC-P invalid	20 μ l	ab109201
Anti-Hsp70 antibody [EPR16892]		20 μ l	ab181606
Anti-TSG101 antibody [EPR7130(B)]		20 μ l	ab125011

Panel target species:
Human

Panel target application:
WB IHC-P

FoxP3 Antibody Panel (EPR15038-69, EPR22102-37, SP97, BLR034F, 236A/E7) [\(ab252201\)](#)

Anti-FOXP3 antibody [BLR034F] - BSA free		20 μ l	ab243890
Anti-FOXP3 antibody [EPR15038-69]		20 μ l	ab191416
Anti-FOXP3 antibody [EPR22102-37]	IHC-P invalid	20 μ g	ab215206
Anti-FOXP3 antibody [SP97]	WB invalid	20 μ l	ab99963
Anti-FOXP3 antibody [236A/E7]		20 μ l	ab20034

Panel target species:
Human

Panel target application:
WB IHC-P

Neuroinflammation Marker (BDNF, ICAM1, TREM2, GFAP, TNF alpha, Iba1) Antibody Panel - Human [\(ab263462\)](#)

Anti-BDNF antibody [EPR1292]		20 μ l	ab108319
Anti-ICAM1 antibody [EP1442Y]		20 μ l	ab53013
Anti-TREM2 antibody [EPR20243]		20 μ l	ab209814
Anti-GFAP antibody [EP672Y]		20 μ l	ab33922
Anti-TNF alpha antibody [EPR20972]		20 μ l	ab215188
Anti-Iba1 antibody [EPR16589]		20 μ l	ab178847

Panel target species:
Human

Panel target application:
WB

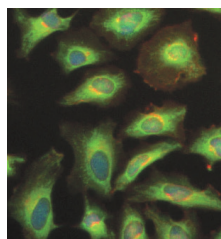
Cell Cycle & Signaling (continued)

Featured Panel



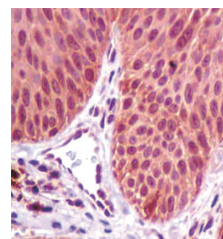
NF-κB Signaling Pathway Antibody Sampler Panel [\(ab228529\)](#)

- Rabbit monoclonal [EPR6235(2)] to IκB alpha (phospho S36) **(ab133462)**
- Rabbit monoclonal [E130] to IκB alpha **(ab32518)**
- Rabbit monoclonal [E381] to NFκB p105 / p50 **(ab32360)**
- Rabbit monoclonal [EP2294Y] to NF-κB p65 (phospho S536) **(ab76302)**
- Rabbit monoclonal [E379] to NF-κB p65 **(ab32536)**
- Anti-Rabbit IgG H&L (HRP) **(ab205718)**



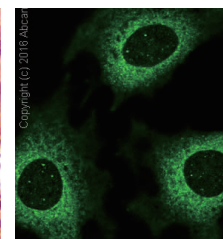
ab32518

Cited in over 440 publications



ab32360

Cited in over 205 publications



ab32536

Cited in over 430 publications

Antibody Panel and Panel Contents

Size Cat. No.

NF-κB Signaling Pathway Antibody Sampler Panel [\(ab228529\)](#)

Anti-IκB alpha (phospho S36) antibody [EPR6235(2)]	Panel target species: Human, Mouse Panel target application: WB	10 μl	ab133462
Anti-IκB alpha antibody [E130]		10 μl	ab32518
Anti-NFκB p105 / p50 antibody [E381]		10 μl	ab32360
Anti-NF-κB p65 (phospho S536) antibody [EP2294Y]		10 μl	ab76302
Anti-NF-κB p65 antibody [E379]		10 μl	ab32536
Anti-Rabbit IgG H&L (HRP)		100 μg	ab205718

p53 Antibody Sampler Panel [\(ab219089\)](#)

Anti-Mutant p53 antibody [Y5]	Panel target species: Human Panel target application: WB	10 μl	ab32049
Anti-p53 (acetyl K382) antibody [EPR358(2)]		10 μl	ab75754
Anti-p53 (phospho S20) antibody [EPR2156(2)]		10 μl	ab157454
Anti-p53 (phospho S392) antibody [EP155Y]		10 μl	ab33889
Anti-p53 (phospho S46) antibody [EP42Y]		10 μl	ab76242
Anti-p53 antibody [DO-1] - ChIP Grade		10 μg	ab1101
Anti-Mouse IgG H&L (HRP)		100 μg	ab205719
Anti-Rabbit IgG H&L (HRP)		100 μg	ab205718

PD-L1 / PD1 Multiplex IHC-IF Antibody Panel (PD-L1, PD1, CD68, CD3, Ki67, panCK) [\(ab269812\)](#)

Anti-CD3 antibody [SP7]	Panel target species: Human Panel target application: IHC-P	50 μl	ab16669
Anti-pan Cytokeratin antibody [C-11]		50 μg	ab7753
Anti-CD68 antibody [SP251]		50 μl	ab192847
Anti-Ki67 antibody [SP6]		50 μl	ab16667
Anti-PD1 antibody [CAL20]		50 μl	ab237728
Anti-PD-L1 antibody [CAL10]		50 μl	ab237726

Regulatory T Cell Marker (CD4, FOXP3, CTLA4, CCR6, HLA-DR) Antibody Panel - Human [\(ab254021\)](#)

Anti-CD4 antibody [EPR6855]	Panel target species: Human Panel target application: WB IHC-P	20 μl	ab133616	
Anti-FOXP3 antibody [EPR22102-37]		IHC-P invalid	20 μl	ab215206
Anti-CTLA4 antibody [CAL49]		20 μl	ab237712	
Anti-CCR6 antibody [EPR22259]		20 μl	ab227036	
Anti-HLA-DR antibody [TAL 1B5]		20 μg	ab20181	

Acetylated Histone H3 Antibody Sampler Panel [\(ab218055\)](#)

Anti-Histone H3 (acetyl K14) antibody [EP964Y] - ChIP Grade		10 µl	ab52946
Anti-Histone H3 (acetyl K18) antibody [EP959Y] - ChIP Grade		10 µl	ab40888
Anti-Histone H3 antibody [EPR16987] - ChIP Grade		10 µl	ab176842
Anti-Histone H3 (acetyl K23) antibody [EPR17712] - ChIP Grade		10 µl	ab177275
Anti-Histone H3 (acetyl K27) antibody [EP16602] - ChIP Grade		10 µl	ab177178
Anti-Histone H3 (acetyl K4) antibody [EPR16596] - ChIP Grade		10 µl	ab176799
Anti-Histone H3 (acetyl K9) antibody [EPR16988] - ChIP Grade		10 µl	ab177177
Anti-Rabbit IgG H&L (HRP)		100 µg	ab205718

Panel target species:
Human, Mouse

Panel target application:
WB ICC ChIP

Acetylated Histone H4 Antibody Sampler Pack [\(ab218056\)](#)

Anti-Histone H4 antibody [EPR16599] - ChIP Grade		10 µl	ab177840
Anti-Histone H4 (acetyl K5) antibody [EP1000Y] - ChIP Grade		10 µl	ab51997
Anti-Histone H4 (acetyl K8) antibody [EP1002Y] - ChIP Grade		10 µl	ab45166
Anti-Histone H4 (acetyl K12) antibody [EPR17906]		10 µl	ab177793
Anti-Histone H4 (acetyl K16) antibody [EPR1004]		10 µl	ab109463
Anti-Histone H4 (acetyl K20) antibody [EPR16998(2)]	Rat, IHC-P invalid	10 µl	ab177191
Anti-Rabbit IgG H&L (HRP)		100 µg	ab205718

Panel target species:
Human, Mouse, Rat

Panel target application:
WB IHC-P ICC

DNA Damage Kinases Panel (ATM, ATM pS1981, ATR, ATR pS428, DNA-PKcs, DNA-PKcs pS2056) [\(ab103970\)](#)

Anti-ATM (phospho S1981) antibody [10H11.E12]		25 µg	ab36810
Anti-ATM antibody [EPR17059]		20 µl	ab199726
Anti-ATR (phospho S428) antibody [EPR2184]		10 µl	ab178407
Anti-ATR antibody		25 µl	ab2905
Anti-DNA PKcs (phospho S2056) antibody [EPR5670]		20 µl	ab124918
Anti-DNA PKcs antibody [Y393]		20 µl	ab32566

Panel target species:
Human

Panel target application:
WB

Histone H3 (K4 methylation) Panel (mono methyl K4, di methyl K4, tri methyl K4) [\(ab103938\)](#)

Anti-Histone H3 (di methyl K4) antibody [Y47] - ChIP Grade		25 µl	ab32356
Anti-Histone H3 (mono methyl K4) antibody - ChIP Grade		25 µg	ab8895
Anti-Histone H3 (tri methyl K4) antibody [mAbcam12209] - ChIP Grade	Mouse, IHC-P invalid	25 µg	ab12209
Anti-Histone H3 antibody [EPR16987] - ChIP Grade		10 µl	ab176842

Panel target species:
Human, Mouse, Rat

Panel target application:
IHC-P ChIP

Histone H3 (K9 methylation) Panel (mono methyl K9, di methyl K9, tri methyl K9) [\(ab113754\)](#)

Anti-Histone H3 (di methyl K9) antibody [mAbcam1220] - ChIP Grade		25 µg	ab1220
Anti-Histone H3 (mono methyl K9) antibody - ChIP Grade	IHC-P invalid	25 µg	ab9045
Anti-Histone H3 (tri methyl K9) antibody - ChIP Grade		25 µg	ab8898
Anti-Histone H3 antibody [EPR16987] - ChIP Grade		10 µl	ab176842

Panel target species:
Human

Panel target application:
WB IHC-P ICC ChIP

Human Histone H3 (Mutated K27M, K36M) + Histone H3.3 (Mutated G34W, G34V, G34R) Antibody Panel [\(ab274411\)](#)

Anti-Histone H3 (mutated K27M) antibody [EPR18340] - ChIP Grade	FCM invalid	20 µl	ab190631
Anti-Histone H3 (mutated K36M) antibody [EPR23614-91]	ChIP invalid	20 µl	ab256384
Anti-Histone H3.3 (mutated G34W) antibody [EPR23581-39] - ChIP Grade		20 µl	ab272691
Anti-Histone H3.3 (mutated G34V) antibody [EPR23520-5] - ChIP Grade		20 µl	ab254401
Anti-Histone H3.3 (mutated G34R) antibody [EPR23519-91] - ChIP Grade	ICC invalid	20 µl	ab254402

Panel target species:
Human

Panel target application:
WB IHC-P ICC FCM ChIP

Human Histone H3.3 (Mutated G34W, G34V, G34R) Antibody Panel [\(ab274410\)](#)

Anti-Histone H3.3 (mutated G34W) antibody [EPR23581-39] - ChIP Grade		20 µl	ab272691
Anti-Histone H3.3 (mutated G34V) antibody [EPR23520-5] - ChIP Grade		20 µl	ab254401
Anti-Histone H3.3 (mutated G34R) antibody [EPR23519-91] - ChIP Grade	ICC invalid	20 µl	ab254402

Panel target species:
Human

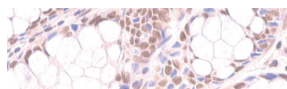
Panel target application:
WB IHC-P ICC FCM ChIP

Featured Panel



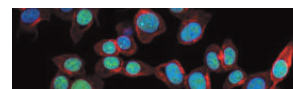
Mismatch Repair (MSH6, PMS2, MLH1, MSH2) Antibody Panel - Human [\(ab252190\)](#)

- Rabbit monoclonal [EPR3894] to MLH1 (**ab92312**)
- Rabbit monoclonal [E130] to IKB alpha (**ab227941**)
- Rabbit monoclonal [EPR3945] to MSH6 (**ab92471**)
- Rabbit monoclonal [EPR3947] to PMS2 (**ab110638**)



ab92312

Cited in over 80 publications



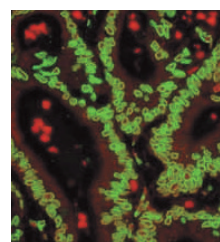
ab92471

Cited in over 55 publications



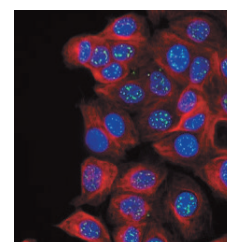
Nuclear Marker (Lamin A + C, SC35, KDM1/LSD1, Fibrillarin, HP1 alpha) Antibody Sampler Panel [\(ab263467\)](#)

- Rabbit monoclonal [EPR4100] to Lamin A + C - Nuclear Envelope Marker (**ab108595**)
- Mouse monoclonal [4C11] to Lamin A + C (**ab238303**)
- Mouse monoclonal [SC-35] to SC35 - Nuclear Speckle Marker (**ab11826**)
- Rabbit monoclonal [EPR6825] to KDM1 / LSD1 - Nuclear Marker (**ab129195**)
- Rabbit monoclonal [EPR10823(B)] to Fibrillarin - Nucleolar Marker (**ab166630**)
- Rabbit monoclonal [EPR5777] to HP1 alpha - Heterochromatin marker (**ab109028**)



ab108595

Cited in over 115 publications



ab11826

Cited in over 135 publications

Antibody Panel and Panel Contents

Size Cat. No.

Mismatch Repair (MSH6, PMS2, MLH1, MSH2) Antibody Panel - Human [\(ab252190\)](#)

Antibody	Application	Panel target species:	Size	Cat. No.
Anti-MLH1 antibody [EPR3894]		Human	20 μ l	ab92312
Anti-MSH2 antibody [EPR21017-123]			20 μ l	ab227941
Anti-MSH6 antibody [EPR3945]	FCM invalid	Human	20 μ l	ab92471
Anti-PMS2 antibody [EPR3947]			20 μ l	ab110638

Non-Homologous End Joining Panel (H2A.X, gamma H2A.X pS139, DNA Ligase IV, Ku70, Ku80) [\(ab213658\)](#)

Antibody	Application	Panel target species:	Size	Cat. No.
Anti-gamma H2A.X (phospho S139) antibody [EP854(2)Y]		Human	20 μ l	ab81299
Anti-Histone H2A.X antibody [EPR895]			20 μ l	ab124781
Anti-Ku70 antibody [EPR4027]		Human	20 μ l	ab92450
Anti-Ku80 antibody [EPR3468]			20 μ l	ab80592
Anti-DNA Ligase IV antibody [EPR16531]			20 μ l	ab193353

Nuclear Marker (Lamin A + C, SC35, KDM1/LSD1, Fibrillarin, HP1 alpha) Antibody Sampler Panel [\(ab263467\)](#)

Antibody	Application	Panel target species:	Size	Cat. No.
Anti-Lamin A + Lamin C antibody [EPR4100] - Nuclear Envelope Marker		Human	20 μ l	ab108595
Anti-Lamin A + Lamin C antibody [4C11]			20 μ g	ab238303
Anti-SC35 antibody [SC-35] - Nuclear Speckle Marker	WB invalid	Human	20 μ g	ab11826
Anti-KDM1/LSD1 antibody [EPR6825] - Nuclear Marker and ChIP Grade			20 μ l	ab129195
Anti-Fibrillarin antibody [EPR10823(B)] - Nucleolar Marker		Human	20 μ l	ab166630
Anti-HP1 alpha antibody [EPR5777] - Heterochromatin marker			20 μ l	ab109028

CD3 epsilon Antibody Panel (E272, EP449E, CAL54) [\(ab252198\)](#)

Anti-CD3 epsilon antibody [CAL54]	Panel target species: Human Panel target application: IHC-P	20 µl	ab237707
Anti-CD3 epsilon antibody [E272]		20 µl	ab32186
Anti-CD3 epsilon antibody [EP449E]		20 µl	ab52959

CD4 Antibody Panel (EPR6855, SP35, BL-155-1c11) [\(ab252199\)](#)

Anti-CD4 antibody [BL-155-1C11] - BSA free	Panel target species: Human Panel target application: WB IHC-P	20 µl	ab243872
Anti-CD4 antibody [EPR6855]		20 µl	ab133616
Anti-CD4 antibody [SP35] WB invalid		20 µl	ab213215

CD8 alpha Antibody Panel (EP1150Y, SP16, SP239, CAL66, CAL67) [\(ab252196\)](#)

Anti-CD8 alpha antibody [CAL66]	Panel target species: Human Panel target application: IHC-P	20 µl	ab237709
Anti-CD8 alpha antibody [CAL67]		20 µl	ab237710
Anti-CD8 alpha antibody [EP1150Y]		20 µl	ab93278
Anti-CD8 alpha antibody [SP16]		20 µl	ab101500
Anti-CD8 alpha antibody [SP239]		20 µl	ab178089

CD8 alpha Antibody Panel (SP16, CAL67, CAL66, EPR22483-288, EPR10640(2)) [\(ab252197\)](#)

Anti-CD8 alpha antibody [SP16]	Panel target species: Human Panel target application: IHC-P	20 µl	ab101500
Anti-CD8 alpha antibody [CAL66]		20 µl	ab237709
Anti-CD8 alpha antibody [CAL77]		20 µl	ab237710
Anti-CD8 alpha antibody [EPR22483-288]		20 µl	ab245118
Anti-CD8 alpha antibody [EPR10640(2)] - N-terminal		20 µl	ab189926

CD163 Antibody Panel (EPR14643-36, EPR19518, EPR14643) [\(ab252200\)](#)

Anti-CD163 antibody [EPR14643] - C-terminal	Panel target species: Human Panel target application: WB IHC-P	20 µl	ab188571
Anti-CD163 antibody [EPR14643-36] - C-terminal		20 µl	ab189915
Anti-CD163 antibody [EPR19518]		20 µl	ab182422

Dendritic Cell Marker (CD103, LY75/DEC-205, TLR7, DC-SIGN + DC-SIGNR) Antibody Panel - Human [\(ab254017\)](#)

Anti-CD103 antibody [EPR4166(2)] WB invalid	Panel target species: Human Panel target application: WB IHC-P	20 µl	ab129202
Anti-LY75/DEC-205 antibody [EPR5233]		20 µl	ab124897
Anti-TLR7 antibody [EPR2088(2)]		20 µl	ab124928
Anti-DC-SIGN + DC-SIGNR antibody [EPR22395-72]		20 µl	ab245115

GITR Antibody Panel (EPR20566, CAL8, CAL52) [\(ab252195\)](#)

Anti-GITR antibody [CAL52]	Panel target species: Human Panel target application: IHC-P ICC	20 µl	ab237713
Anti-GITR antibody [CAL8] ICC invalid		20 µl	ab237714
Anti-GITR antibody [EPR20566]		20 µl	ab223841

LAG-3 Antibody Panel (EPR20261, EPR4392(2), SP346, CAL77, CAL25, CAL26) [\(ab252193\)](#)

Anti-LAG-3 antibody [CAL25]	Panel target species: Human Panel target application: IHC-P	20 µl	ab237718
Anti-LAG-3 antibody [CAL26]		20 µl	ab237719
Anti-LAG-3 antibody [CAL77]		20 µl	ab237720
Anti-LAG-3 antibody [EPR20261]		20 µl	ab209236
Anti-LAG-3 antibody [EPR4392(2)] - C-terminal		20 µl	ab180187
Anti-LAG-3 antibody [SP346] - C-terminal		20 µl	ab227706

Macrophage Marker (CD11b, CD68, CD163, CD14, CD16) Antibody Panel - Human [\(ab254013\)](#)

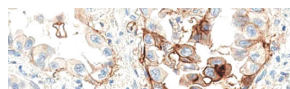
Anti-CD11b antibody [EP1345Y] - C-terminal	Panel target species: Human Panel target application: WB IHC-P	20 µl	ab52478
Anti-CD68 antibody [EPR20545]		20 µl	ab213363
Anti-CD163 antibody [EPR19518]		20 µl	ab182422
Anti-CD14 antibody [SP192]		20 µl	ab183322
Anti-CD16 antibody [SP175] WB invalid		20 µl	ab183354

Featured Panel

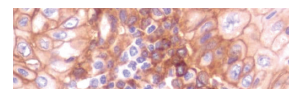


PD-L1 Antibody Panel (28-8, 73-10, SP142, CAL10) [\(ab239749\)](#)

- Rabbit monoclonal [73-10] to PD-L1 (**ab228415**)
- Rabbit monoclonal [28-8] to PD-L1 (**ab205921**)
- Rabbit monoclonal [SP142] to PD-L1 (**ab228462**)
- Rabbit monoclonal [CAL10] to PD-L1 (**ab237726**)



ab205921
Cited in over 475 publications



ab228462
Cited in over 90 publications

Antibody Panel and Panel Contents

Size Cat. No.

Neutrophil Marker (CD11b, CD16, CD32, CD44, CD55) Antibody Panel - Human [\(ab254016\)](#)

Antibody	Application	Panel target species:	Size	Cat. No.
Anti-CD11b antibody [SP330] - C-terminal		Human	20 μ l	ab224805
Anti-CD16 antibody [SP175]			20 μ l	ab183354
Anti-CD32A+CD32B antibody [AT10]	IHC-P invalid		20 μ g	ab23336
Anti-CD44 antibody [F10-44-2]			20 μ g	ab6124
Anti-CD55 antibody [EPR6689]	FCM invalid		20 μ l	ab133684

PD-L1 Antibody Panel (28-8, 73-10, SP142, CAL10) [\(ab239749\)](#)

Antibody	Application	Panel target species:	Size	Cat. No.
Anti-PD-L1 antibody [73-10]		Human	10 μ l	ab228415
Anti-PD-L1 antibody [28-8]			10 μ l	ab205921
Anti-PD-L1 antibody [SP142] - C-terminal	WB invalid		25 μ l	ab228462
Anti-PD-L1 antibody [CAL10]			10 μ l	ab237726

SLAMF7 Antibody Panel (EPR21155, CAL7) [\(ab252203\)](#)

Antibody	Application	Panel target species:	Size	Cat. No.
Anti-SLAMF7/CS1 antibody [CAL7]		Human	20 μ l	ab237730
Anti-SLAMF7/CS1 antibody [EPR21155]			20 μ l	ab230945

Stimulatory Immune Checkpoint Panel - Human IHC [\(ab278178\)](#)

Antibody	Application	Panel target species:	Size	Cat. No.
Anti-CD134 / OX40L receptor antibody [EPR23000-42]		Human	20 μ l	ab264466
Anti-ICOS antibody [EPR20560]			20 μ l	ab224644
Anti-CD40 antibody [EPR20735]			20 μ l	ab224639
Anti-CD28 antibody [EPR22076]			20 μ l	ab243228
Anti-CD27 antibody [EPR8569]			20 μ l	ab131254
Anti-CD226 antibody [EPR21172]			20 μ l	ab212076
Anti-TMEM173 antibody [EPR13130-55]			20 μ l	ab239074
Anti-GITR antibody [CAL8]	WB invalid		20 μ l	ab237714

Stimulatory Immune Checkpoint panel 2 - Human WB [\(ab278177\)](#)

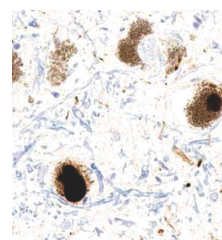
Antibody	Application	Panel target species:	Size	Cat. No.
Anti-CD28 antibody [EPR22076]		Human	20 μ l	ab243228
Anti-CD27 antibody [EPR8569]			20 μ l	ab131254
Anti-CD226 antibody [EPR21172]			20 μ l	ab212076
Anti-TMEM173 antibody [EPR13130-55]			20 μ l	ab239074
Anti-GITR antibody [EPR20566]			20 μ l	ab223841
Anti-TNFSF18/GITRL antibody [EPR20583]	IHC-P invalid		20 μ l	ab211037

Featured Panel

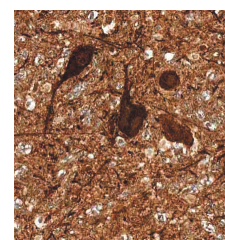


Alpha Synuclein Antibody Sampler Panel [\(ab263465\)](#)

- Rabbit monoclonal [EP1536Y] to Alpha-synuclein (phospho S129) (**ab51253**)
- Rabbit monoclonal [MJFR1] to Alpha-synuclein (**ab138501**)
- Rabbit monoclonal [MJFR-14-6-4-2] to Alpha-synuclein filament - Conformation-Specific (**ab209538**)
- Mouse monoclonal [LB 509] to Alpha-synuclein (**ab27766**)
- Mouse monoclonal [syn211] to Alpha-synuclein (**ab80627**)
- Rabbit monoclonal [EPR20535] to Alpha-synuclein (**ab212184**)



ab51253
Cited in over 370 publications

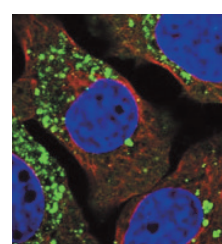


ab138501
Cited in over 155 publications

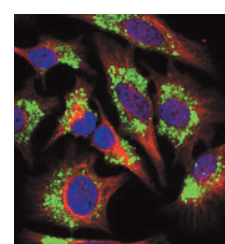


Autophagy Analysis (ATG16L1, ATG16L1 pS278, SQSTM1, LC3B, Ubiquitin, M6PR) Antibody Sampler Panel [\(ab269811\)](#)

- Rabbit monoclonal [EPR19016] to ATG16L1 (phospho S278) (**ab195242**)
- Rabbit monoclonal [EPR15638] to ATG16L1 - N-terminal (**ab187671**)
- Rabbit monoclonal [EPR4844] to SQSTM1 / p62 - Autophagosome Marker alpha (**ab109012**)
- Rabbit monoclonal [EPR18709] to LC3B - Autophagosome Marker (**ab192890**)
- Rabbit monoclonal [EPR8830] to Ubiquitin (**ab134953**)
- Rabbit monoclonal [EPR6599] to M6PR (cation independent) - Lysosome Membrane Marker (**ab124767**)



ab109012
Cited in over 440 publications



ab192890
Cited in over 465 publications

Antibody Panel and Panel Contents

Size Cat. No.

Alpha Synuclein Antibody Sampler Panel [\(ab263465\)](#)

Anti-Alpha-synuclein (phospho S129) antibody [EP1536Y]		20 μ l	ab51253
Anti-Alpha-synuclein antibody [MJFR1]		20 μ l	ab138501
Anti-Alpha-synuclein aggregate antibody [MJFR-14-6-4-2] - Conformation-Specific	WB invalid	20 μ l	ab209538
Anti-Alpha-synuclein antibody [LB 509]	IHC-P invalid	20 μ g	ab27766
Anti-Alpha-synuclein antibody [syn211]		20 μ g	ab80627
Anti-Alpha-synuclein antibody [EPR20535]		20 μ l	ab212184

Panel target species:
Human

Panel target application:
WB IHC-P

Astrocyte Marker (ALDH1L1, EAAT1, EAAT2, GFAP) Antibody Sampler Panel [\(ab226481\)](#)

Anti-ALDH1L1 antibody [EPR12743(B)]		10 μ l	ab177463
Anti-EAAT1 antibody [EPR12686]		10 μ l	ab181036
Anti-EAAT2 antibody [EPR19798]	Human invalid	10 μ l	ab205248
Anti-GFAP antibody [EPR1034Y]		10 μ l	ab68428
Anti-Rabbit IgG H&L (HRP)		100 μ g	ab205718

Panel target species:
Human, Mouse, Rat

Panel target application:
WB IHC-P

Autophagy Analysis (ATG16L1, ATG16L1 pS278, SQSTM1, LC3B, Ubiquitin, M6PR) Antibody Sampler Panel [\(ab269811\)](#)

Anti-ATG16L1 (phospho S278) antibody [EPR19016]	Rat invalid	20 μ l	ab195242
Anti-ATG16L1 antibody [EPR15638] - N-terminal	ICC invalid	20 μ l	ab187671
Anti-SQSTM1 / p62 antibody [EPR4844] - Autophagosome Marker	IHC-P invalid	20 μ l	ab109012
Anti-LC3B antibody [EPR18709] - Autophagosome Marker		20 μ l	ab192890
Anti-Ubiquitin antibody [EPR8830]		20 μ l	ab134953
Anti-M6PR (cation independent) antibody [EPR6599]		20 μ l	ab124767

Panel target species:
Human, Mouse, Rat

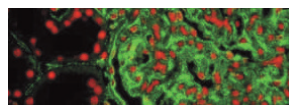
Panel target application:
WB IHC-P ICC

Featured Panel

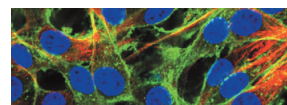


Fibroblast Marker (Vimentin, alpha smooth muscle Actin, Hsp47, S100A4) Antibody Panel - Human, Mouse [\(ab254015\)](#)

- Rabbit monoclonal [EPR3776] to Vimentin (**ab92547**)
- Rabbit monoclonal [E184] to alpha smooth muscle Actin (**ab32575**)
- Rabbit monoclonal [EPR4217] to Hsp47 (**ab109117**)
- Rabbit monoclonal [EPR14639(2)] to S100A4 (**ab197896**)



ab92547
Cited in over 1730 publications



ab32575
Cited in over 580 publications

Antibody Panel and Panel Contents

Size Cat. No.

Autophagy Marker (APG5L/ATG5, ATG16L1, ATG4B, ATG9A, Beclin 1, LC3B) Antibody Sampler Panel [\(ab228525\)](#)

Antibody	Species	Application	Size	Cat. No.
Anti-APG5L/ATG5 antibody [EPR1755(2)]	Human, Mouse, Rat	WB	20 µl	ab108327
Anti-ATG16L1 antibody [EPR15638]			20 µl	ab187671
Anti-ATG4B antibody [EPR6436(2)]			20 µl	ab154843
Anti-ATG9A antibody [EPR2450(2)]			20 µl	ab108338
Anti-Beclin 1 antibody [EPR19662]			20 µl	ab207612
Anti-LC3B antibody [EPR18709]			20 µl	ab192890

Conformation-Specific Amyloid beta Antibody Sampler Panel [\(ab218719\)](#)

Antibody	Species	Application	Size	Cat. No.
Anti-Amyloid Fibril antibody [mOC116] - Conformation-Specific	Human	IHC-P	10 µl	ab205342
Anti-Amyloid Fibril antibody [mOC22] - Conformation-Specific			10 µl	ab205339
Anti-Amyloid Fibril antibody [mOC78] - Conformation-Specific			10 µl	ab205341
Anti-Amyloid Fibril antibody [mOC87] - Conformation-Specific			10 µl	ab201062
Anti-beta Amyloid 1-42 antibody [mOC23] - Conformation-Specific			10 µl	ab205340
Anti-beta Amyloid 1-42 antibody [mOC31] - Conformation-Specific			10 µl	ab201059
Anti-beta Amyloid 1-42 antibody [mOC64] - Conformation-Specific			10 µl	ab201060
Anti-beta Amyloid 1-42 antibody [mOC98] - Conformation-Specific			10 µl	ab201061
Anti-Rabbit IgG H&L (HRP)			100 µg	ab205718

Endothelial Cell Marker (CD31, CD34, ICAM1, CD45) Antibody Sampler Panel - Human [\(ab254023\)](#)

Antibody	Species	Application	Size	Cat. No.
Anti-CD31 antibody [EP3095]	Human	WB, IHC-P	20 µl	ab134168
Anti-CD31 antibody [P2B1]			20 µg	ab24590
Anti-CD34 antibody [EP373Y]			20 µl	ab81289
Anti-ICAM1 antibody [EP1442Y]			20 µl	ab53013
Anti-CD45 antibody [EP322Y]			20 µl	ab40763

Fibroblast Marker (Vimentin, alpha smooth muscle Actin, Hsp47, S100A4) Antibody Panel - Human, Mouse [\(ab254015\)](#)

Antibody	Species	Application	Size	Cat. No.
Anti-Vimentin antibody [EPR3776] - Cytoskeleton Marker	Human, Mouse	WB, IHC-P, ICC, FCM	20 µl	ab92547
Anti-alpha smooth muscle Actin antibody [E184]			20 µl	ab32575
Anti-Hsp47 antibody [EPR4217]			20 µl	ab109117
Anti-S100A4 antibody [EPR14639(2)]			20 µl	ab197896

Hematopoietic Stem Cell Marker (CD34, CD59, CD90 / Thy1, CD38, c-Kit) Antibody Panel - Human [\(ab254022\)](#)

Antibody	Species	Application	Size	Cat. No.
Anti-CD34 antibody [EP373Y]	Human	WB, IHC-P	20 µl	ab81289
Anti-CD59 antibody [EPR6425(2)]			20 µl	ab133707
Anti-CD90 / Thy1 antibody [EPR3133]			20 µl	ab133350
Anti-CD38 antibody [EPR4106]			20 µl	ab108403
Anti-c-Kit antibody [YR145]			20 µl	ab32363

Antibody Panel and Panel Contents		Size	Cat. No.
LRRK2 Antibody Sampler Panel (ab263464)			
Anti-LRRK2 (phospho S935) antibody [UDD2 10(12)]		20 µl	ab133450
Anti-LRRK2 antibody [MJFF2 (c41-2)]		20 µl	ab133474
Anti-LRRK2 (phospho S1292) antibody [MJFR-19-7-8]	Mouse invalid	20 µl	ab203181
Anti-LRRK2 antibody [UDD3 30(12)]		20 µl	ab133518
Anti-LRRK2 antibody [MJFF3 (c69-6)]		20 µl	ab133475
Mature Neuron Marker (MAP2, NeuN, NFH, PSD95, Synaptophysin) Antibody Sampler Panel (ab218257)			
Anti-MAP2 antibody [EPR19691]	WB invalid	20 µl	ab183830
Anti-NeuN antibody [EPR12763]		20 µl	ab177487
Anti-Neurofilament heavy polypeptide antibody [EPR20020]		20 µl	ab207176
Anti-PSD95 antibody [EPR23124-118] - Synaptic Marker	ICC invalid	20 µl	ab238135
Anti-Synaptophysin antibody [YE269]		20 µl	ab32127
Mature Oligodendrocyte Marker (Olig2, MBP, MOG, SOX10) Antibody Sampler Panel - Human, Mouse (ab254026)			
Anti-Olig2 antibody [EPR2673]		20 µl	ab109186
Anti-Myelin Basic Protein antibody [EPR21188]		20 µl	ab218011
Anti-Myelin oligodendrocyte glycoprotein antibody [EP4281]		20 µl	ab109746
Anti-SOX10 antibody [EPR4007]	IHC-P invalid	20 µl	ab155279
Anti-SOX10 antibody [SP267]		20 µl	ab227680
Metabolic Suppression of Immune Cells Panel - Human IHC (ab278179)			
Anti-iNOS antibody [SP126]		20 µl	ab115819
Anti-Liver Arginase antibody [EPR6672(B)]		20 µl	ab133543
Anti-CD73 antibody [EPR6114]		20 µl	ab133582
Anti-Indoleamine 2, 3-dioxygenase antibody [EPR20374]		20 µl	ab211017
Anti-CD39 antibody [EPR20627]		20 µl	ab223842
Anti-Adenosine Receptor A2a antibody [EPR23731-50]		20 µl	ab260032
Microglia Marker (CD11b, CD45, Iba1, TMEM119) Antibody Sampler Panel (ab226482)			
Anti-CD11b antibody [EPR1344]		10 µl	ab133357
Anti-CD45 antibody [EP322Y]		10 µl	ab40763
Anti-Iba1 antibody [EPR16588]		10 µl	ab178846
Anti-TMEM119 antibody [28-3]	Human, WB invalid	10 µl	ab209064
Anti-Rabbit IgG H&L (HRP)		100 µg	ab205718
Natural Killer NK Cell Marker (CD3, NCAM1, CD94, NKG2D, SLAMF6, NK-p44) Antibody Panel - Human (ab254014)			
Anti-CD3 antibody [SP162]		20 µl	ab135372
Anti-NCAM1 antibody [EP2567Y]		20 µl	ab75813
Anti-CD94 antibody [EPR21003]		20 µl	ab235441
Anti-NKG2D antibody [EPR22935-131]	WB invalid	20 µl	ab233557
Anti-SLAMF6 antibody [EPR22170]		20 µl	ab224201
Anti-NK-p44 antibody [EPR5060(2)]		20 µl	ab133668
Neural Stem Cell Marker (Nestin, SOX2, Occludin, E Cadherin, Hes1, Notch1) Antibody Panel - Human (ab254027)			
Anti-Nestin antibody [SP103]		20 µl	ab105389
Anti-SOX2 antibody [EPR3131]	FCM invalid	20 µl	ab92494
Anti-Occludin antibody [EPR20992]		20 µl	ab216327
Anti-E Cadherin antibody [EP700Y] - Intercellular Junction Marker		20 µl	ab40772
Anti-Hes1 antibody [EPR4226]		20 µl	ab108937
Anti-Notch1 antibody [EP1238Y]		20 µl	ab52627

Neural Stem Cell Marker (Nestin, SOX2, Occludin, E Cadherin, Hes1, Notch1) Antibody Panel - Mouse [\(ab254028\)](#)

Anti-Nestin antibody [Rat-401] - Neural Stem Cell Marker	ICC invalid	Panel target species: Mouse Panel target application: WB IHC-P ICC	20 µg	ab6142
Anti-SOX2 antibody [EPR3131]			20 µl	ab92494
Anti-Occludin antibody [EPR20992]	ICC invalid		20 µl	ab216327
Anti-E Cadherin antibody [DECMA-1] - Intercellular Junction Marker	WB, IHC invalid		20 µg	ab11512
Anti-Hes1 antibody [EPR4226]			20 µl	ab108937
Anti-Notch1 antibody [EP1238Y]			20 µl	ab52627

Parkinson's Disease Research Antibody Panel [\(ab226767\)](#)

Anti-alpha Synuclein antibody [MJFR1]		Panel target species: Human Panel target application: WB ICC	10 µl	ab138501
Anti-LRRK2 antibody [MJFF2 (c41-2)]	ICC invalid		10 µl	ab133474
Anti-PARK7/DJ1 antibody [EP2815Y]			10 µl	ab76008
Anti-PINK1 antibody [EPR20730]			10 µl	ab216144
Anti-Rabbit IgG H&L (HRP)			100 µg	ab205718

Rab Family (RAB4, RAB5, RAB7, RAB8A, RAB9, RAB10) Antibody Sampler Panel [\(ab263466\)](#)

Anti-RAB7 antibody [EPR7589]	Rat invalid	Panel target species: Human, Mouse, Rat Panel target application: WB ICC FCM	20 µl	ab137029
Anti-RAB10 antibody [MJF-R23]			20 µl	ab237703
Anti-RAB8A antibody [EPR14873]			20 µl	ab188574
Anti-Rab5 antibody [EPR21801]			20 µl	ab218624
Anti-Rab9 antibody [EPR13272] - Late Endosome Marker	FCM invalid		20 µg	ab179815
Anti-Rab4 antibody [EPR3043] - Early Endosome Marker			20 µl	ab109009

Synaptic Marker (Synaptophysin, Synapsin1, PSD95, VAMP2) Antibody Sampler Panel - Human, Mouse [\(ab263463\)](#)

Anti-Synaptophysin antibody [YE269]		Panel target species: Human, Mouse, Rat Panel target application: WB ICC	20 µl	ab32127
Anti-Synaptophysin antibody [EP1098Y]			20 µl	ab52636
Anti-Synapsin I antibody [EPR23531-50] - Synaptic Marker			20 µl	ab254349
Anti-PSD95 antibody [K28/43] - Synaptic Marker			20 µg	ab192757
Anti-PSD95 antibody [EPR23124-118] - Synaptic Marker	ICC invalid		20 µl	ab238135
Anti-VAMP2 antibody [EPR12790]			20 µl	ab181869

Tau Research (Tau, S198, S199, S202 + T205, S214, S396, S404, S422, T231) Antibody Sampler Panel [\(ab226492\)](#)

Anti-Tau (phospho S198) antibody [EPR2400]		Panel target species: Human Panel target application: WB	10 µl	ab79540
Anti-Tau (phospho S199) antibody [EPR2401Y]			10 µl	ab81268
Anti-Tau (phospho S202 + T205) antibody [EPR20390]			10 µl	ab210703
Anti-Tau (phospho S214) antibody [EPR1884(2)]			10 µl	ab170892
Anti-Tau (phospho S396) antibody [EPR2731]			10 µl	ab109390
Anti-Tau (phospho S404) antibody [EPR2605]			10 µl	ab92676
Anti-Tau (phospho S422) antibody [EPR2866]			10 µl	ab79415
Anti-Tau (phospho T231) antibody [EPR2488]			10 µl	ab151559
Anti-Tau antibody [TAU-5]			10 µl	ab80579
Anti-Mouse IgG H&L (HRP)			100 µg	ab205719
Anti-Rabbit IgG H&L (HRP)			100 µg	ab205718

Wnt Pathway Antibody Sampler Panel [\(ab242226\)](#)

Anti-beta Catenin antibody [E247] - ChIP Grade	ICC invalid	Panel target species: Human, Mouse, Rat Panel target application: WB IHC-P ICC	10 µl	ab32572
Anti-LEF1 antibody [EPR2029Y]			10 µl	ab137872
Anti-Cyclin D1 antibody [EPR2241] - C-terminal			10 µl	ab134175
Anti-Axin 2 antibody [EPR2005(2)]			10 µl	ab109307
Anti-GSK3 beta antibody [Y174]	Mouse, Rat invalid		10 µl	ab32391

Neuroscience (continued)

Antibody Panel and Panel Contents

Size Cat. No.

Wnt/Beta Catenin Signaling Pathway Antibody Sampler Panel [\(ab228526\)](#)

Anti-c Myc antibody [Y69]	Panel target species: Human, Mouse, Rat Panel target application: WB IHC-P	10 μ l	ab32072
Anti-c-Jun antibody [E254] - CHIP Grade		10 μ l	ab32137
Anti-Cyclin D1 antibody [EPR2241]		10 μ l	ab134175
Anti-LEF1 antibody [EPR2029Y]		10 μ l	ab137872
Anti-Met (c-Met) antibody [EP1454Y]		10 μ l	ab51067
Anti-Rabbit IgG H&L (HRP)		100 μ g	ab205718

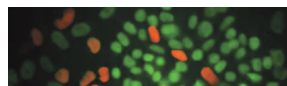
Stem Cells

Featured Panel

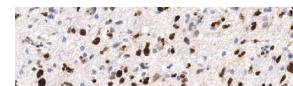


Human Embryonic Stem Cell Marker Panel (Oct4, Nanog, Tra-1-60 and SOX2) [\(ab238602\)](#)

- Rabbit polyclonal to Nanog ([ab21624](#))
- Rabbit polyclonal to Oct4 ([ab19857](#))
- Rabbit polyclonal to SOX2 ([ab97959](#))
- Mouse monoclonal [TRA-1-60] to TRA-1-60 (R) ([ab16288](#))



ab19857
Cited in over 560 publications



ab97959
Cited in over 735 publications

Antibody Panel and Panel Contents

Size Cat. No.

Human Embryonic Stem Cell Marker Panel (Oct4, Nanog, Tra-1-60 and SOX2) [\(ab238602\)](#)

Anti-Nanog antibody	Panel target species: Human Panel target application: WB ICC	50 μ l	ab21624
Anti-Oct4 antibody		50 μ g	ab19857
Anti-SOX2 antibody		50 μ g	ab97959
Anti-TRA-1-60 (R) antibody [TRA-1-60]		50 μ g	ab16288

Embryonic Stem Cell Marker Panel (Human: Oct4, Nanog, Tra-1-60 (R), SOX2, SSEA4) [\(ab109884\)](#)

Anti-Nanog antibody [EPR2027(2)]	Panel target species: Human Panel target application: WB ICC	50 μ l	ab109250	
Anti-Oct4 antibody		50 μ g	ab19857	
Anti-SOX2 antibody		50 μ g	ab97959	
Anti-SSEA4 antibody [MC813-70]		WB invalid	50 μ l	ab16287
Anti-TRA-1-60 (R) antibody [TRA-1-60]		50 μ g	ab16288	

Mesenchymal Stromal Cell Marker (CD44, CD45, CD90 CD29, CD105) Antibody Panel - Human [\(ab93758\)](#)

Anti-CD105 antibody [105C02]	IHC-P invalid	Panel target species: Human Panel target application: WB IHC-P	50 μ l	ab44967
Anti-CD44 antibody [F10-44-2]	WB invalid		50 μ g	ab6124
Anti-CD45 antibody			50 μ g	ab10559
Anti-CD90 / Thy1 antibody [AF-9]	WB, IHC invalid, FCM valid		50 μ g	ab23894
Anti-Integrin beta 1 antibody [EPR1040Y]			10 μ l	ab134179

Tags & Cell Markers

Antibody Panel and Panel Contents

Size Cat. No.

EpCAM (EPR20532-225, AUA1, EPR20532-222, EPR677(2)) Antibody Sampler Panel - Human, IHC [\(ab269810\)](#)

Anti-EpCAM antibody [EPR20532-225]		Panel target species: Human	20 µl	ab223582
Anti-EpCAM antibody [AUA1]	WB invalid		20 µl	ab20160
Anti-EpCAM antibody [EPR20532-222]		Panel target application: WB IHC-P	20 µl	ab213500
Anti-EpCAM antibody [EPR677(2)]			20 µl	ab124825

ErbB2 / HER2 Antibody Panel (EP1045Y, EPR19547-12, SP3, SP101, CAL27) [\(ab252204\)](#)

Anti-ErbB2 / HER2 antibody [CAL27]		Panel target species: Human	20 µl	ab237715
Anti-ErbB2 / HER2 antibody [EP1045Y]			20 µl	ab134182
Anti-ErbB2 / HER2 antibody [EPR19547-12]		Panel target application: WB IHC-P	20 µl	ab214275
Anti-ErbB2 / HER2 antibody [SP101]			20 µl	ab231438
Anti-ErbB2 / HER2 antibody [SP3]	WB invalid		20 µl	ab16662

Plasma Membrane Marker (Na/K ATPase, pan Cadherin, PMCA1) Antibody Sampler Panel - Human, Mouse [\(ab254025\)](#)

Anti-Sodium Potassium ATPase antibody [EP1845Y] - Plasma Membrane Loading Control		Panel target species: Human, Mouse, Rat	20 µl	ab76020
Anti-alpha 1 Sodium Potassium ATPase antibody [464.6]			20 µg	ab7671
Anti-pan Cadherin antibody [EPR1792Y] - Intercellular Junction Marker		Panel target application: WB IHC-P ICC	20 µl	ab51034
Anti-pan Cadherin antibody [mAbcam22744]	IHC-P invalid		20 µg	ab22744
Anti-PMCA1 antibody [EPR12029]	ICC invalid		20 µl	ab190355

WB Loading Control

Antibody Panel and Panel Contents

Size Cat. No.

Mouse Loading Control Antibody Panel [\(ab199713\)](#)

Anti-alpha Tubulin antibody [DM1A] - Loading Control		Panel target species: Human, Mouse	40 µg	ab7291
Anti-alpha 1 Sodium Potassium ATPase antibody [464.6]			40 µg	ab7671
Anti-GAPDH antibody [mAbcam 9484] - Loading Control		Panel target application: WB	40 µg	ab9484
Anti-Histone H3 antibody [mAbcam 24834] - Nuclear Loading Control and ChIP Grade			40 µg	ab24834
Anti-COX IV antibody [mAbcam33985] - Mitochondrial Marker			40 µg	ab33985
Anti-Mouse IgG H&L (HRP)			100 µg	ab205719

Mouse Loading Control Antibody Panel (Alexa Fluor® 680) [\(ab199716\)](#)

Anti-beta Actin antibody [mAbcam 8226] - Loading Control (Alexa Fluor® 680)		Panel target species: Human, Mouse	40 µg	ab184092
Anti-alpha Tubulin antibody [DM1A] - Loading Control (Alexa Fluor® 680)			40 µg	ab184093
Anti-GAPDH antibody [mAbcam 9484] - Loading Control (Alexa Fluor® 680)	Mouse invalid	Panel target application: WB	40 µg	ab184095

Mouse Loading Control Antibody Panel (Alexa Fluor® 790) [\(ab200701\)](#)

Anti-alpha Tubulin antibody [DM1A] - Loading Control (Alexa Fluor® 790)		Panel target species: Human, Mouse	40 µg	ab184577
Anti-beta Actin antibody [mAbcam 8226] - Loading Control (Alexa Fluor® 790)			40 µg	ab184576
Anti-GAPDH antibody [mAbcam 9484] - Loading Control (Alexa Fluor® 790)		Panel target application: WB	40 µg	ab184578

Rabbit Loading Control Antibody Panel [\(ab199712\)](#)

Anti-alpha Tubulin antibody [EPR13478(B)] - Loading Control	Mouse, Rat invalid	Panel target species: Human, Mouse, Rat	10 µl	ab176560
Anti-COX IV antibody [EPR9442(ABC)] - Mitochondrial Loading Control			10 µl	ab202554
Anti-GAPDH antibody [EPR16891]		Panel target application: WB IHC-P ICC FCM	10 µl	ab181602
Anti-Histone H3 antibody [EPR16987] - Nuclear Loading Control and ChIP Grade			10 µl	ab176842
Anti-Sodium Potassium ATPase antibody [EP1845Y] - Plasma Membrane Loading Control			10 µl	ab76020
Anti-Rabbit IgG H&L (HRP)	ICC, FCM invalid		100 µg	ab205718